



On- Board Charger Kit

Models: T7 / Speed Scrub Rider



Kit installation to be performed by TennantTrue® service or an authorized Tennant service provider.

INSTALLATION INSTRUCTIONS:

Installation Time: 1 hour

Special Tools Required: None

FOR SAFETY: Before servicing machine, stop on level surface, turn off machine, and remove key.

1. Disconnect battery cables from machine.
2. Remove the operator seat and battery shroud from machine (Figure 1).
3. Remove the front two batteries from machine (Figure 1).

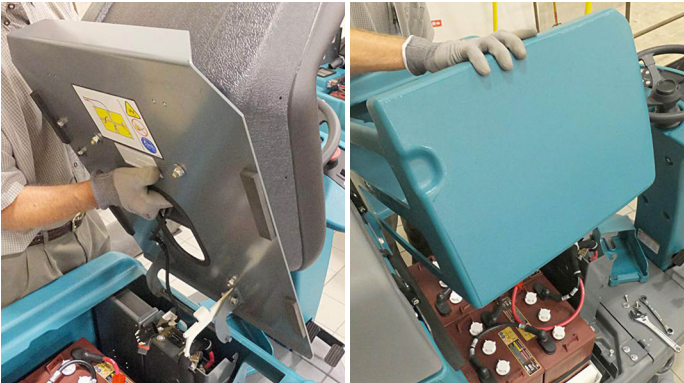


Fig. 1

4. Adhere the rubber seal strips to the two charger brackets as shown (Figure 2).

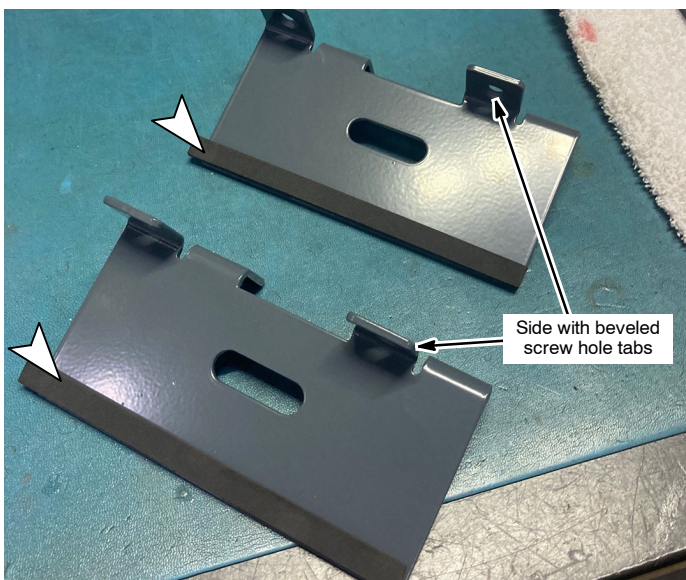


Fig. 2

5. Attach the two charger brackets to machine using supplied hardware (Figure 3). Do not tighten down the top bracket at this time. *See Figure 13 if machine is not equipped with mounting holes.*

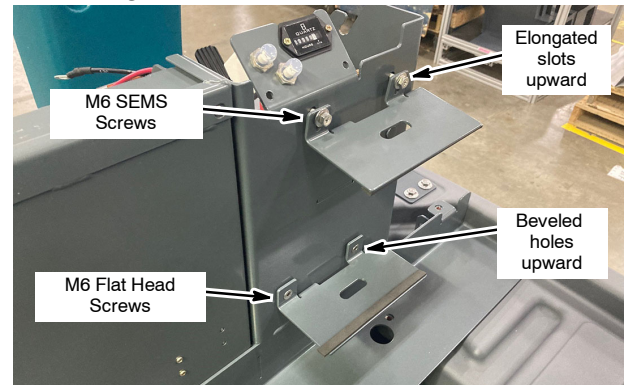


Fig. 3

6. Position the charger between the two brackets and press the top bracket downward against charger for a secure fit then tighten screws (Figure 4).



Fig. 4

7. Remove the off-board charger plug from machine and discard (Figure 5).

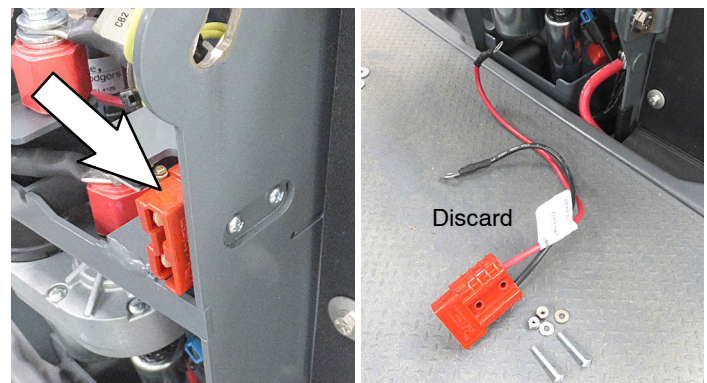


Fig. 5

8. Remove the charger connector interlock switch from machine and discard (Figure 6).

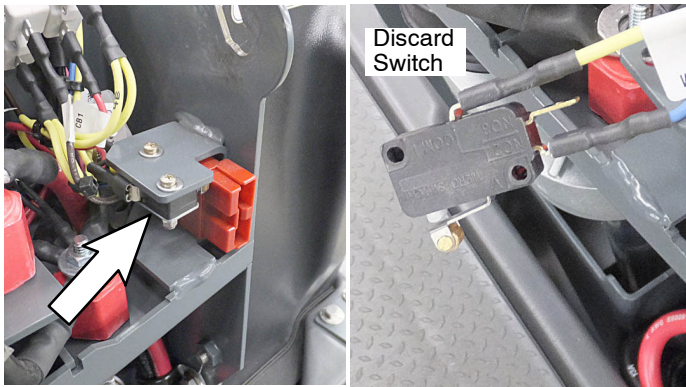


Fig. 6

9. Connect the white and black wires from the on-board charger to the wires removed from the interlock switch (Figure 7).

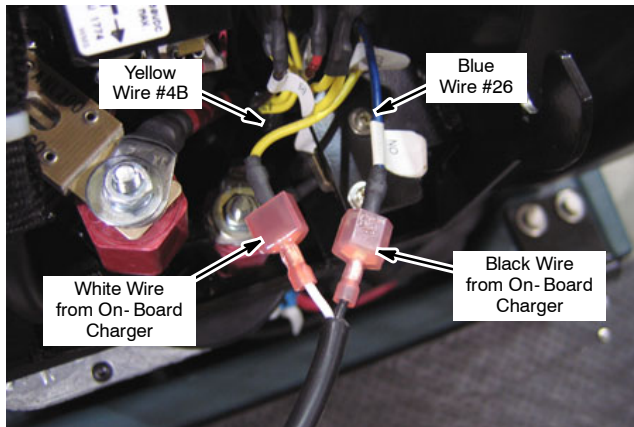


Fig. 7

10. Using wire ties, secure charger wire to main harness as shown (Figure 8).

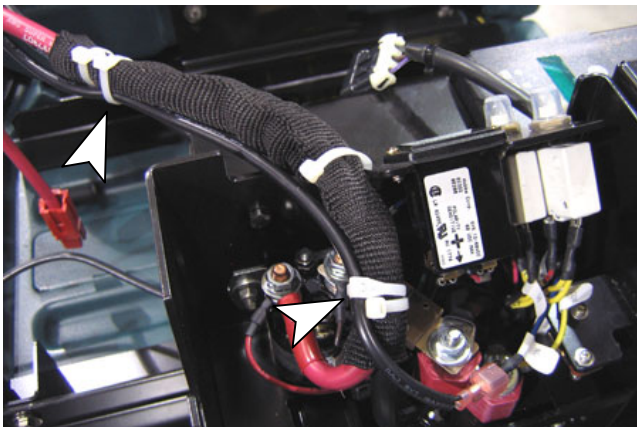


Fig. 8

11. Reinstall the batteries in machine.
12. Attach the black wire from charger to negative battery terminal, and red wire to the positive battery terminal. Reconnect the red battery plug (Figure 9).

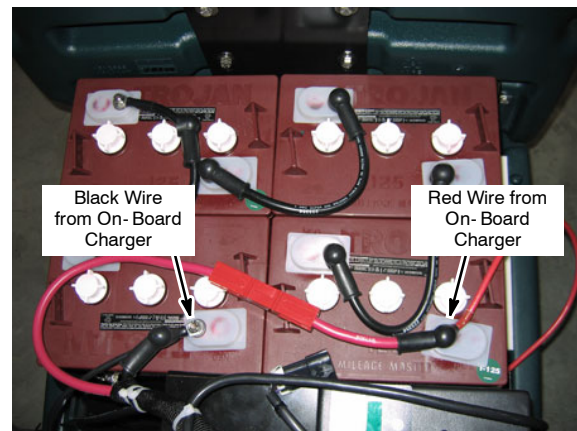


Fig. 9

13. Reinstall the battery compartment shroud.
14. Reinstall the seat on machine and connect wire harness.
15. Install grommet in seat plate and route the charger's power cord through hole. Secure power cord with wire-tie as shown (Figure 10).

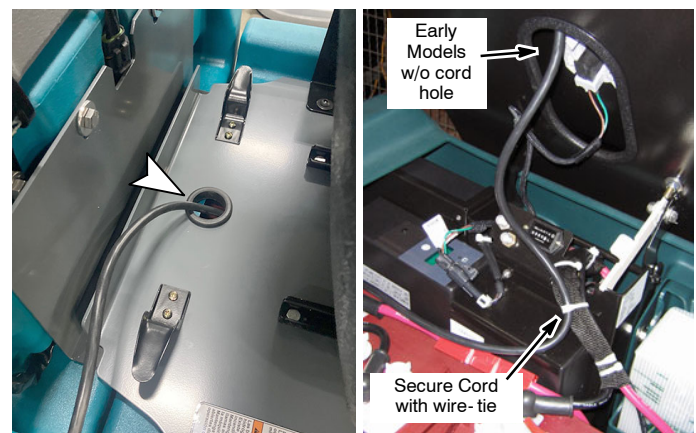


Fig. 10

16. Mount the cord hooks to the seat plate as shown, using hardware provided. Coil power cord around hooks as shown (Figure 11). See Figure 12 if seat plate is not equipped with pre-drilled holes to mount hooks.

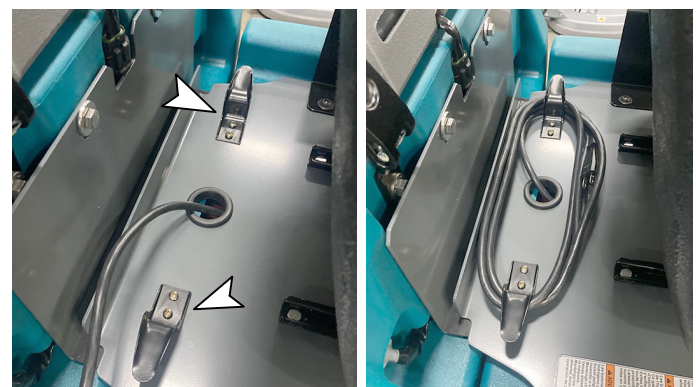


Fig. 11

Early models require hole drilling as described below.

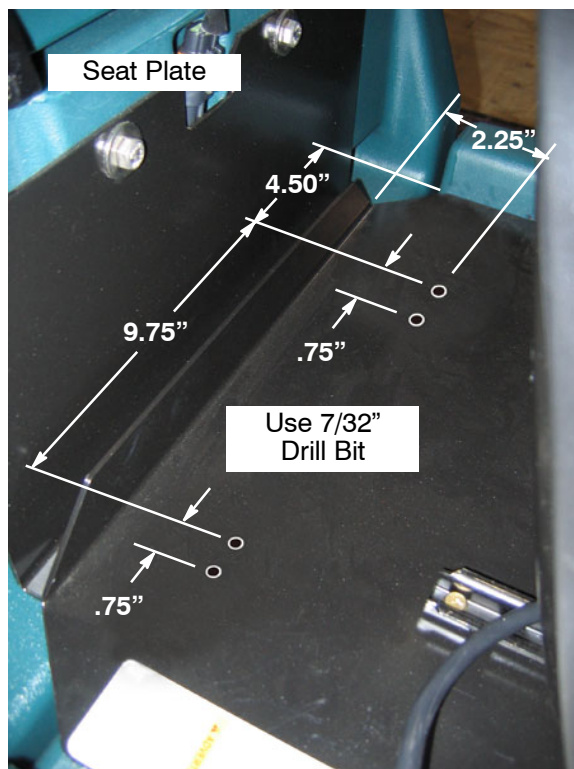


Fig. 12

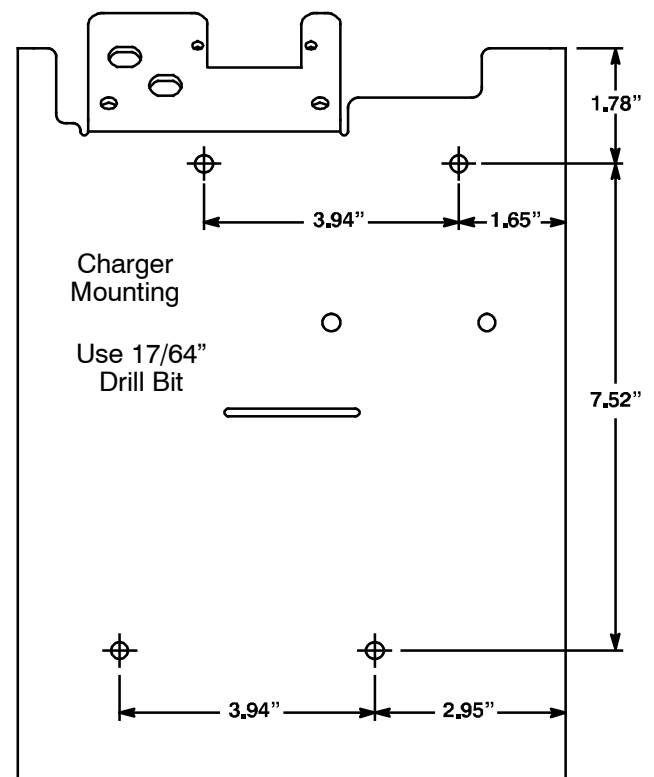
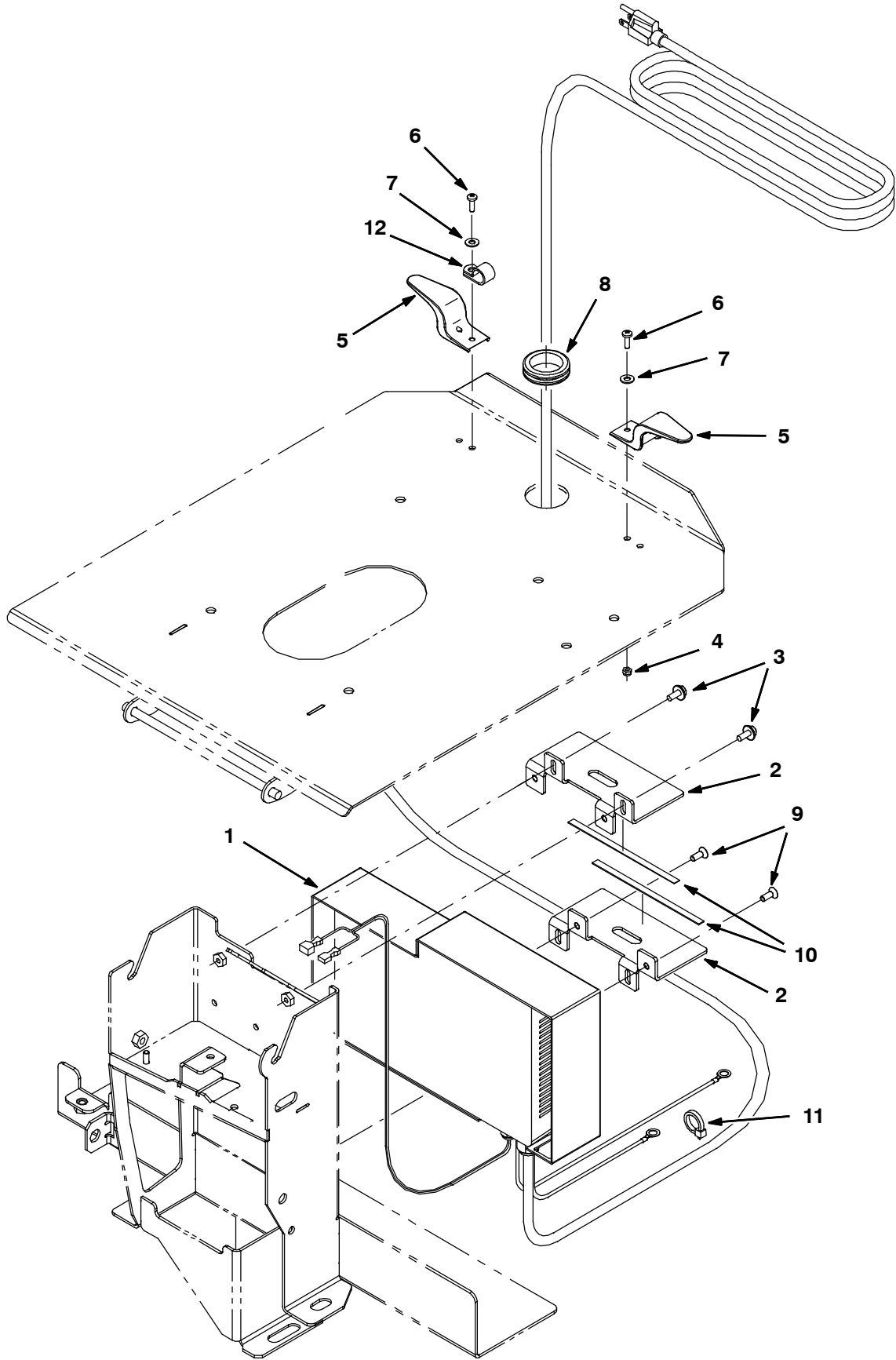


Fig. 13

On-Board Battery Charger Kit



On-Board Battery Charger Kit

Ref.	Part No.	Description	Qty.
1	1250064	Charger, 24vdc 25a 115vac	1
2	1231256	Bracket, Chrgr, On- Board	2
3	1034731	Screw, Hex, M6 X 1.00 X 16, Ss, Sems (upper bracket)	2
4	06549	Nut, Hex, Lock, M5 X 0.80, NI	4
5	230920.BK	Hook, Cord, Blk [Boss]	2
6	06933	Screw, Pan, M5 X 0.80 X 16, 4.8	4
7	01684	Washer, Flat	4
8	10632- 13	Grommet, Rbr, 1.50id, F/1.8h, .19 Matl	1
9	09163	Screw, Flat Dead, Soc, M6 X 1.00 X 16, 18- 8,Ss (lower bracket)	2
10	1020280	Seal, Afmkt, Rbr, Clsd, Adh, 01ft	2
11	130040	Tie, Cable, Nyl, 06.0l .12w	5
12	26395- 2	Clamp, Cable	1
ns	08712	Nut, Hex, Lock, M6 (For early models to mount charger brackets)	4